



Speechless



Madison 3943
Waterfall 2000



Candid 3007
Ice 041



Jane 9085
Fuschia 4080



Nitro 2317
Cream Soda 042



Highbeams 9834
Buttercup 2640



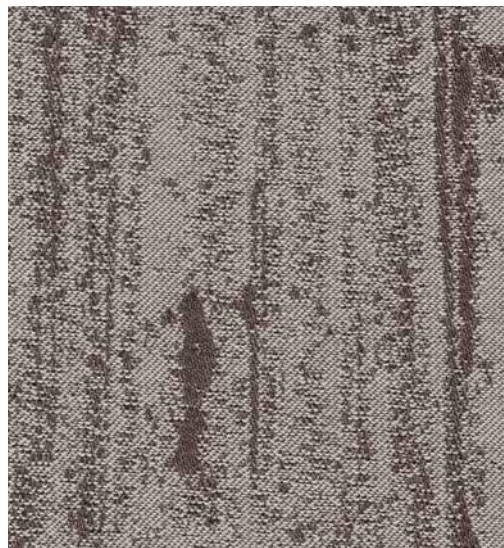
Metro 3077
Goldust 010



Otto 2670
Gold 7020



Sprite 2671
Powder 7011



Woodland 3083/3084
Shale 3084-020



Studio 54 2966
Summer 7021



Crosstown 2526
Sterling 061



Groove 3497
Froth 020



Sand 2658
Cocoa 071



Hatchet 2977
Armament 031



Hopscotch 2823
Field Stone 021



Metallation 5118
Polished Pewter 1678



Rattan 3087
Graphite 060

Specifications

Pattern	Content	Width	Repeat	Backing/ Treatment	Application
Candid 3007	56% recycled polyester 44% polypropylene	66" min. useable	none	none/ none	Acoustic, Panel
Crosstown** 2526	23% post-con. recycled polyester 77% pre-con. recycled polyester	66" min. useable	12.5" vertical 16.2" horizontal	none/ none	Acoustic, Panel, Drapery
Groove** 3497	100% post-con. recycled polyester	66" min. useable	20" vertical 16.75" horizontal	none/ none	Acoustic, Panel, Drapery
Hatchet** 2977	14% post-con. recycled polyester 86% pre-con. recycled polyester	66" min. useable	11" vertical 16.4" horizontal	none/ none	Acoustic, Panel, Drapery
Highbeams** 9834	25% post-con. recycled polyester 75% pre-con. recycled polyester	54" min. useable	none	none/ BLOCKaide®	Acoustic, Panel Seating, Drapery
Hopscotch** 2823	60% post-con. recycled polyester 40% pre-con. recycled polyester	66" min. useable	none	none/ none	Acoustic, Panel Drapery
Jane** 9085	100% recycled polyester	54" min. useable	none	none/ BLOCKaide®	Acoustic, Panel, Seating, Drapery
Madison** 3943	100% post-con. recycled polyester	54" min. useable	none	none/ BLOCKaide®	Acoustic, Panel, Seating, Drapery
Metallation† 5118	56% post-con. recycled polyester 44% polyester	66" min. useable	none	none/ none	Acoustic, Panel, Drapery
Metro** 3077	11% post-con. recycled polyester 89% pre-con. recycled polyester	66" min. useable	8.57" vertical 14.12" horizontal	none/ none	Acoustic, Panel Drapery
Nitro** 2317	100% post-con. recycled polyester	66" min. useable	16.7" vertical 9.1" horizontal	none/ none	Acoustic, Panel, Drapery
Otto 2670	31% post-con. recycled polyester 34% pre-con. recycled polyester 35% polypropylene	66" min. useable	none	none/ polyester binder	Acoustic, Panel
Rattan** 3087	34% post-con. recycled polyester 66% pre-con. recycled polyester	66" min. useable	17.7" vertical 13.9" horizontal	none/ none	Acoustic, Panel, Drapery
Sand** 2658	100% post-con. recycled polyester	66" min. useable	none	none/ none	Acoustic, Panel, Drapery
Sprite** 2671	5% post-con. recycled polyester 95% pre-con. recycled polyester	66" min. useable	.83" vertical .26" horizontal	none/ polyester binder	Acoustic, Panel, Drapery
Studio 54 2966	100% polypropylene	66" min. useable	.1" vertical none horizontal	none/ polyester binder	Acoustic, Panel
Woodland 3083/3084	100% post-con. recycled polyester	66" min. useable	11.4" vertical 16.3" horizontal	none/ none	Acoustic, Panel, Drapery

Miscellaneous

Proudly woven in the USA supporting our local communities.
Colors may vary slightly between dye lots.
These are directional fabrics.
Application testing of these products is recommended.

Visit guilfordofmaine.com for complete specs and samples.



* Terratex is a registered trademark of True Textiles, Inc. and designates fabrics that are made from 100% recycled or compostable material using increasingly sustainable manufacturing practices to produce a high quality product that is recyclable at the end of its useful life.



* CO₂ emissions from 100% of the electricity used by the manufacturer to produce these products have been measured and offset in accordance with The CarbonNeutral Protocol.



† These patterns are included in the underwriters laboratory panel fabric recognition program. Additional testing of these U.L. recognized component fabrics is not required on approved panels from participating manufacturers.

Guilford of Maine

guilfordofmaine.com

800 544 0200 Customer Care
616 554 2255 Fax