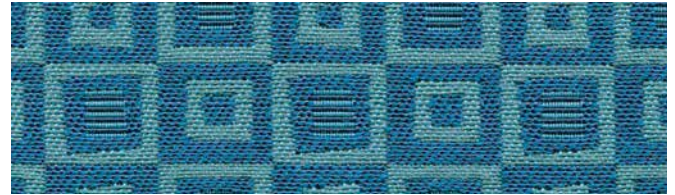




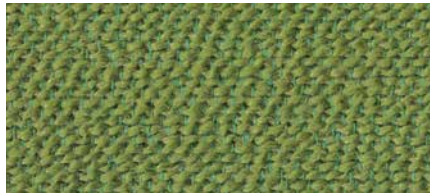
**Overachiever 9643/9645**  
Gulf 9643-4030



**Mod 9469/9470**  
Pistachio 9469-080



**Best In Show 9651**  
Azure 4030



**George 9877**  
Lawn 3020



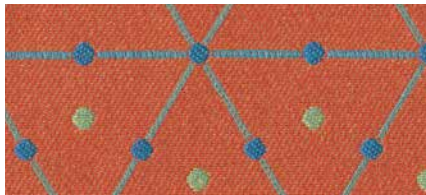
**On Call**



**Limelight 9480/9481**  
Kiwi 9481-3010



**Madison 3943**  
Waterfall 2000



**Limelight 9480/9481**  
Clementine 9481-3020



**Winner's Circle 9642/9644**  
Lagoon 9644-4110



**Moguls 2386**  
Mandarin 2245



**Pizzazz 9471/9472**  
Nougat 9471-072



**Oscar 9647/9649**  
Dew Drop 9649-4130



**Mod 9469/9470**  
Parfait 9469-060



**BeeHave 3948**  
Pear 2698



**Mainstream 9478/9479**  
Pecan 9479-3010



**Pizzazz 9471/9472**  
Azure 9472-050



**Mainstream 9478/9479**  
Lagoon 9479-3040



**Rock Star 9646/9648**  
Frost 9646-4020



## Specifications

Pattern	Content	Width	Repeat	Backing/ Treatment	Abrasion	Application
<b>BeeHave</b> * 3948	35% post-con. recycled polyester 65% pre-con. recycled polyester	54" min. useable	1.1" vertical .75" horizontal	none/ BLOCKaide®	75,000 double rubs	Upholstery, Panel Acoustic, Drapery
<b>Best In Show</b> 9651	50% recycled solution-dyed nylon 50% solution-dyed nylon	54" min. useable	1.1" vertical 1.2" horizontal	acrylic/ BLOCKaide®	145,000 double rubs	Upholstery
<b>George</b> 9877	7% post-con. recycled polyester 73% pre-con. recycled polyester 20% polyester	54" min. useable	none	acrylic/ none	100,000 double rubs	Upholstery, Drapery
<b>Limelight</b> * 9480/9481	44% post-con. recycled polyester 56% pre-con. recycled polyester	54" min. useable	4.125" vertical 2.375" horizontal	polyester/ none	50,000 double rubs	Upholstery, Drapery
<b>Madison</b> * 3943	100% post-con. recycled polyester	54" min. useable	none	none/ BLOCKaide®	100,000 double rubs	Upholstery, Panel Drapery
<b>Mainstream</b> * 9478/9479	48% post-con. recycled polyester 52% pre-con. recycled polyester	54" min. useable	19.75" vertical 14.25" horizontal	polyester/ none	60,000 double rubs	Upholstery, Drapery
<b>Mod</b> * 9469/9470	43% post-con. recycled polyester 57% pre-con. recycled polyester	54" min. useable	8.2" vertical 1.4" horizontal	none/ none	100,000 double rubs	Upholstery, Drapery
<b>Moguls</b> * 2386	35% post-con. recycled polyester 65% pre-con. recycled polyester	54" min. useable	.8" vertical .26" horizontal	none/ none	100,000 double rubs	Upholstery, Drapery
<b>Oscar</b> 9647/9649	50% recycled solution-dyed nylon 50% solution-dyed nylon	54" min. useable	9.6" vertical 4.7" horizontal	acrylic/ BLOCKaide®	200,000 double rubs	Upholstery
<b>Overachiever</b> 9643/9645	50% recycled solution-dyed nylon 50% solution-dyed nylon	54" min. useable	11.5" vertical 14" horizontal	acrylic/ BLOCKaide®	150,000 double rubs	Upholstery
<b>Pizzazz</b> * 9471/9472	41% post-con. recycled polyester 59% pre-con. recycled polyester	54" min. useable	7.3" vertical 4.8" horizontal	none/ none	75,000 double rubs	Upholstery, Drapery
<b>Rock Star</b> 9646/9648	50% recycled solution-dyed nylon 50% solution-dyed nylon	54" min. useable	3.4" vertical 3.5" horizontal	acrylic/ BLOCKaide®	125,000 double rubs	Upholstery
<b>Winner's Circle</b> 9642/9644	50% recycled solution-dyed nylon 50% solution-dyed nylon	54" min. useable	1.2" vertical 3.5" horizontal	acrylic/ BLOCKaide®	150,000 double rubs	Upholstery

## Miscellaneous

Proudly woven in the USA supporting our local communities. Colors may vary slightly between dye lots. These are directional fabrics. Mainstream shown railroaded. Best In Show, Oscar, Overachiever, Rock Star and Winner's Circle can be cleaned with a 4:1 water-to-bleach solution. Application testing of these products is recommended.



\* Terratex is a registered trademark of True Textiles, Inc. and designates fabrics that are made from 100% recycled or compostable material using increasingly sustainable manufacturing practices to produce a high quality product that is recyclable at the end of its useful life.



\* CO<sub>2</sub> emissions from 100% of the electricity used by the manufacturer to produce these products have been measured and offset in accordance with The CarbonNeutral Protocol.



† These patterns are included in the underwriters laboratory panel fabric recognition program. Additional testing of these U.L. recognized component fabrics is not required on approved panels from participating manufacturers.

Multiple factors affect fabric durability and appearance retention, including end-user application and proper maintenance. Wyzenbeek results above 100,000 double rubs have not been shown to be a reliable indicator of increased fabric lifespan.

Visit [guilfordofmaine.com](http://guilfordofmaine.com) for complete specs and samples.

## Guilford of Maine

[guilfordofmaine.com](http://guilfordofmaine.com)

800 544 0200 Customer Care  
616 554 2255 Fax

07/15