

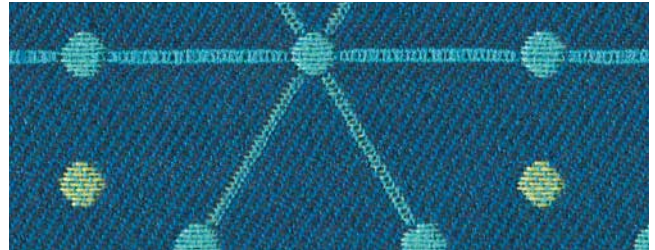
**Lifesaver 2877**  
Mango 6030



**Mod 9469/9470**  
Iris 9470-022



**Pizzazz 9471/9472**  
Cerise 9472-020



**Limelight 9480/9481**  
Pacific 9481-3040



**George 9877**  
Vermillion 3050



**One.Two.Three 3942**  
Peacock 1006



**Mod 9469/9470**  
Golden 9469-070



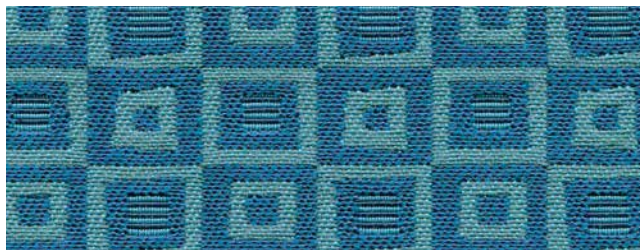
**Playful 3400**  
Cilantro 2759



**Open House 2334**  
Sunshine 2082



**BeeHave 3948**  
Raspberry 2695



**Best In Show 9651**  
Azure 4030



**Playful 3400**  
Fuchsia 2750

## Specifications

Pattern	Content	Width	Repeat	Backing/ Treatment	Abrasion	Application
<b>BeeHave*</b> 3948	35% post-con. recycled polyester 65% pre-con. recycled polyester	54" min. useable	1.1" vertical .75" horizontal	none/ BLOCKaide®	75,000 double rubs	Upholstery, Panel Acoustic, Drapery
<b>Best In Show</b> 9651	50% recycled solution-dyed nylon 50% solution-dyed nylon	54" min. useable	1.1" vertical 1.2" horizontal	acrylic/ BLOCKaide®	145,000 double rubs**	Upholstery
<b>George</b> 9877	7% post-con. recycled polyester 73% pre-con. recycled polyester 20% polyester	54" min. useable	none	acrylic/ none	100,000 double rubs**	Upholstery, Drapery
<b>Lifesaver*</b> 2877	8% post-con. recycled polyester 92% pre-con. recycled polyester	54" min. useable	.625" vertical and horizontal	none/ Scotchgard™	40,000 double rubs	Upholstery, Drapery
<b>Limelight*</b> 9480/9481	44% post-con. recycled polyester 56% pre-con. recycled polyester	54" min. useable	4.125" vertical 2.375" horizontal	polyester/ none	50,000 double rubs	Upholstery, Drapery
<b>Mod*</b> 9469/9470	43% post-con. recycled polyester 57% pre-con. recycled polyester	54" min. useable	8.2" vertical 1.4" horizontal	none/ none	100,000 double rubs**	Upholstery, Drapery
<b>One.Two.Three</b> 3942	83% post-con. recycled polyester 17% polyester	54" min. useable	.75" vertical .625" horizontal	none/ BLOCKaide®	100,000 double rubs**	Upholstery, Drapery
<b>Open House*</b> 2334	35% post-con. recycled polyester 65% pre-con. recycled polyester	54" min. useable	none	none/ none	250,000 double rubs**	Upholstery, Panel Acoustic, Drapery
<b>Pizzazz*</b> 9471/9472	41% post-con. recycled polyester 59% pre-con. recycled polyester	54" min. useable	7.3" vertical 4.8" horizontal	none/ none	75,000 double rubs	Upholstery, Drapery
<b>Playful</b> 3400	50% recycled nylon 50% nylon	54" min. useable	none	SBR backcoating/ BLOCKaide®	100,000 double rubs**	Upholstery

## Miscellaneous

Proudly woven in the USA supporting our local communities.  
Colors may vary between dye lots.  
These are directional fabrics.  
Best In Show can be cleaned with a 4:1 water-to-bleach solution.  
Application testing of these products is recommended.



Terratex is a registered trademark of True Textiles, Inc. and designates fabrics that are made from 100% recycled or compostable material using increasingly sustainable manufacturing practices to produce a high quality product that is recyclable at the end of its useful life.



CO<sub>2</sub> emissions from 100% of the electricity used by the manufacturer to produce these products have been measured and offset in accordance with The CarbonNeutral Protocol.

Visit [guilfordofmaine.com](http://guilfordofmaine.com) for complete specs and samples.

\*\*Multiple factors affect fabric durability and appearance retention, including end-user application and proper maintenance. Wyzenbeek results above 100,000 double rubs have not been shown to be a reliable indicator of increased fabric lifespan.

## Guilford of Maine

[guilfordofmaine.com](http://guilfordofmaine.com)

800 544 0200 Customer Care  
616 554 2255 Fax

09/15