



Elevate



Beacon 9256
Sky 080



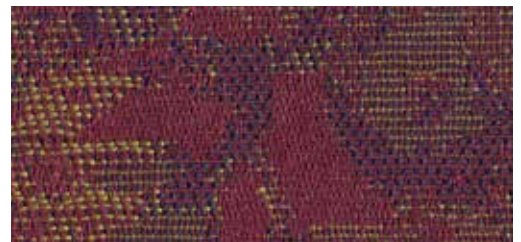
Anchorage 2335
Aubergine 2036



Dibley 9937
Cranberry 5020



Shiraz 9087
Kelly 5030



Tranquil 9278
Cranberry 5040



Madison 3943
Walnut 2007



Atlantis 9279
Walnut 5010



Tracery 9266
Chestnut 5070



Cape Cod 3073
Cloud 7030



George 9877
Suede 3064



Playful 3400
Chestnut 005



FR701 2100
Medium Grey 298



Revival 9217
Earth 5091



Lifesaver 2877
Licorice 6091



Open House 2334
Onyx 2016



Jane 9085
Jet 4040

Specifications

Pattern	Content	Width	Repeat	Backing/ Treatment	Abrasion	Application
Anchorage ^{†*} 2335	35% post-con. rec. poly. 65% pre-con. rec. poly.	66" min. useable	none	none/ none	not applicable	Seating, Panel, Acoustic, Drapery
Atlantis 9279	100% recycled polyester	54" min. useable	1.875" vertical 2.375" horizontal	SBR backcoating/ BLOCKaide®	50,000 double rubs	Seating, Drapery
Beacon [*] 9256	100% recycled polyester	54" min. useable	.25" vertical .5" horizontal	none/ none	35,000 double rubs	Seating, Drapery
Cape Cod ^{†*} 3073	24% post-con. rec. poly. 76% polyester	66" min. useable	none	none/ polyester binder	not applicable	Panel, Acoustic, Drapery
Dibley 9937	100% recycled polyester	54" min. useable	1.1875" vertical 1.5" horizontal	SBR backcoating/ BLOCKaide®	50,000 double rubs	Seating, Drapery
FR701 ^{†*} 2100	100% post-con. rec. poly.	66" min. useable	none	none/ none	not applicable	Panel, Acoustic, Drapery
George 9877	7% post-con. rec. poly. 73% pre-con. rec. poly. 20% polyester	54" min. useable	none	acrylic/ none	100,000 double rubs	Seating, Drapery
Jane ^{†*} 9085	100% recycled polyester	54" min. useable	none	none/ BLOCKaide®	50,000 double rubs	Seating, Panel, Acoustic, Drapery
Lifesaver [*] 2877	8% post-con. rec. poly. 92% pre-con. rec. poly.	54" min. useable	.625" vertical and horizontal	none/ Scotchgard™	40,000 double rubs	Seating, Drapery
Madison ^{†*} 3943	100% post-con. rec. poly.	54" min. useable	none	none/ BLOCKaide®	100,000 double rubs	Seating, Panel, Acoustic, Drapery
Open House [*] 2334	35% post-con. rec. poly. 65% pre-con. rec. poly.	54" min. useable	none	none/ none	250,000 double rubs	Seating, Panel, Acoustic, Drapery
Playful 3400	50% recycled nylon 50% nylon	54" min. useable	none	SBR backcoating/ BLOCKaide®	100,000 double rubs	Seating
Revival 9217	58% nylon 29% recycled polyester 12% polyester 1% olefin	54" min. useable	6.75" vertical and horizontal	acrylic/ BLOCKaide®	60,000 double rubs	Seating
Shiraz 9087	100% recycled polyester	54" min. useable	1.6" vertical 1.5" horizontal	SBR backcoating/ BLOCKaide®	30,000 double rubs	Seating, Drapery
Tracery 9266	100% recycled polyester	54" min. useable	4.25" vertical 4.75" horizontal	acrylic/ BLOCKaide®	75,000 double rubs	Seating, Drapery
Tranquil 9278	73% recycled polyester 27% nylon	54" min. useable	7.5" vertical 14.25" horizontal	acrylic/ BLOCKaide®	40,000 double rubs	Seating

Miscellaneous

Proudly woven in the USA supporting our local communities.
Colors may vary slightly between dye lots.
These are directional fabrics except FR701.
Dibley and Shiraz shown railroaded.
Application testing of these products is recommended.



* Terratex is a registered trademark of True Textiles, Inc. and designates fabrics that are made from 100% recycled or compostable material using increasingly sustainable manufacturing practices to produce a high quality product that is recyclable at the end of its useful life.



* CO₂ emissions from 100% of the electricity used by the manufacturer to produce these products have been measured and offset in accordance with The CarbonNeutral Protocol.



† These patterns are included in the underwriters laboratory panel fabric recognition program. Additional testing of these U.L. recognized component fabrics is not required on approved panels from participating manufacturers.

Visit guilfordofmaine.com for complete specs and samples.

Guilford of Maine

guilfordofmaine.com

800 544 0200 Customer Care
616 554 2255 Fax

05/15